

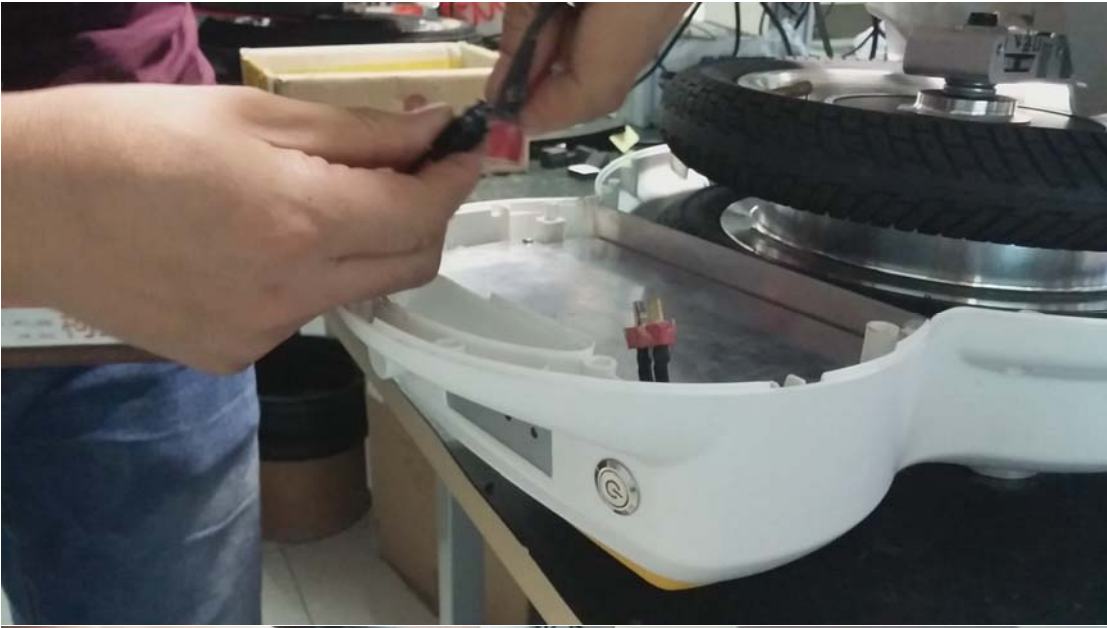
How to replace battery and tires for Model Q1

1. Take out the screws on the casing



2. Disconnect the power wires inside





Replace battery

1) Take out the screws of the metal plate cover in the battery side



2) Take away the metal plate cover and we can see the battery inside



3) Take out the previous battery to be replaced



4) Put the new battery with double sided adhesive foam tape

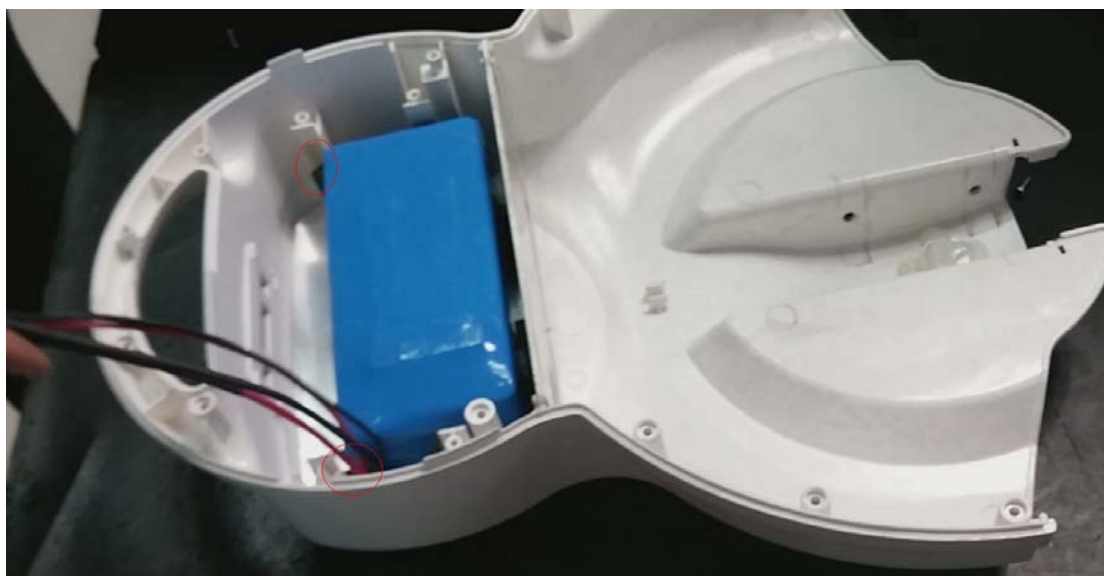


5) Place the new battery inside the casing



6) Put some foam around the battery to fix its position so that it will not move while using.

(You can add more foam than showing in below picture if you need)



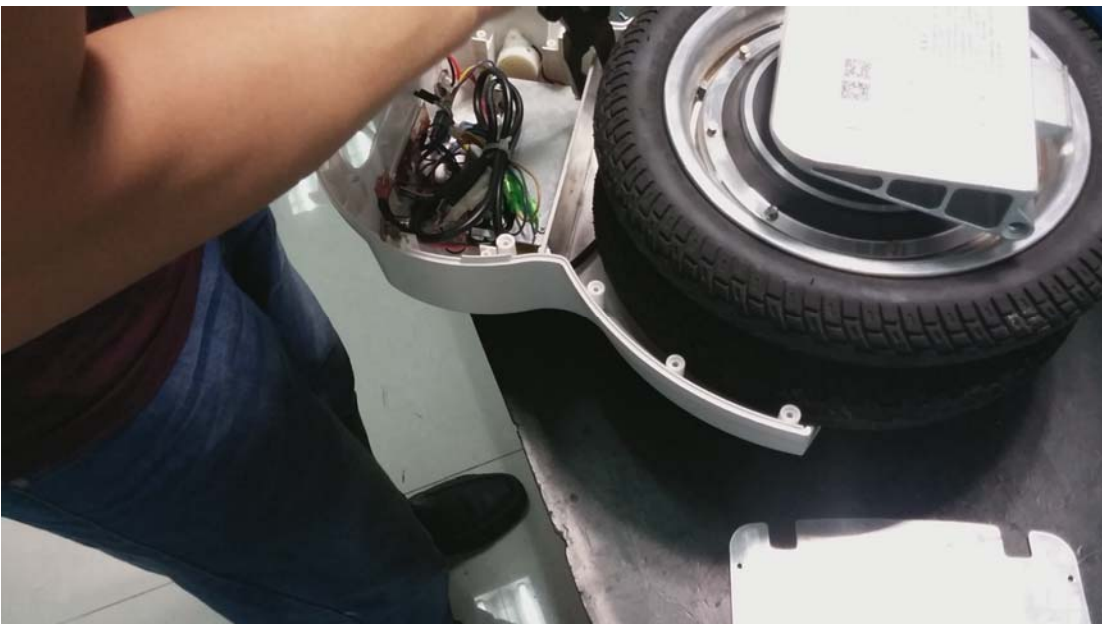
7) Put back the metal plate cover and insert in the screws



Replace the tires

Please always remember power on the unit to discharge battery residual in the motor drive board right after opening the metal plate cover

1) Take out the metal plate here



2) Disconnect the wires inside (at the mother board side)

Better take a photo before you disconnecting the wires, so that it will be easier for you to assemble it back later.





3) Take out the screws at the pillar (at the casing of the mother board side)



4) Turn over the plastic casing and take out the black wire in below picture from the casing.





5) Deflate to change the tires





6) Take out the cover tire and inner tube by using tool and then assemble the new ones. Pump up the tires after assembled the new ones. Make sure the tire pressure for both tires keeps the same.



3. Assemble back the whole units after replaced the new tires or new battery.

Remember that the black wire needs to go through the slot as shown in below picture.

